

# Newport Harbor Moorings Update

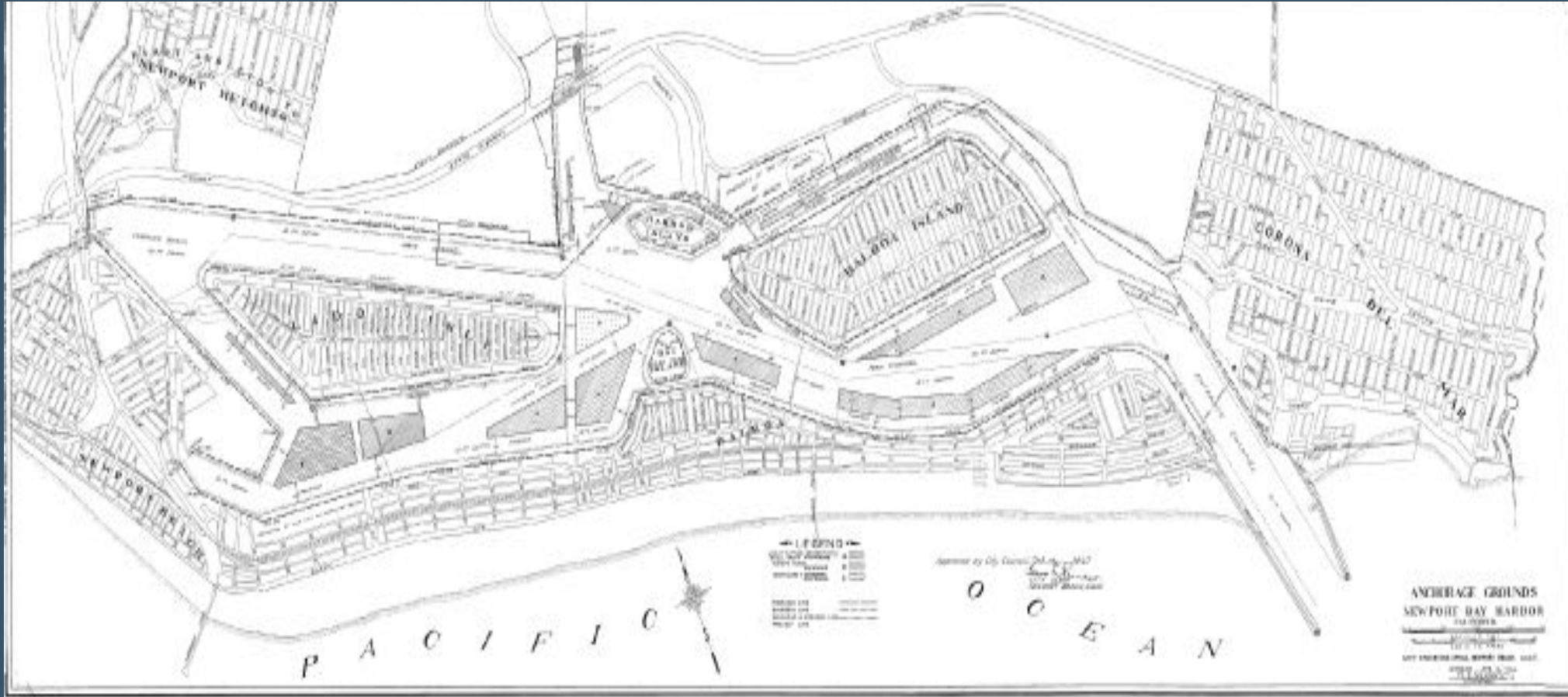
Bill Kenney

*State*  
OF THE  
*Bay*



NEWPORT HARBOR FOUNDATION

# 1946 Mooring Layout



# Offshore Mooring Appraisal Rate Analysis

Offshore Mooring Appraisal Rate Analysis						
Mooring Type	LOA for Slip or Mooring	BYB Comparable Average LOA Slip Rate	Netzer Certified Appraisal Rates Calculated as a Percentage of BYB Slip Rate	NB Harbor Commission Recommended Rates as a Percentage of BYB Slip Rate	Netzer Certified Appraisal Offshore Mooring Fair Market Rates Per Lineal Foot/Month	NB Harbor Commission Recommended Rates
Onshore	18	32.23	62%	24%	20.00	7.71
Offshore	25	32.38	32%	24%	10.50	7.77
Offshore	30	39.60	31%	24%	12.30	9.50
Offshore	35	42.59	32%	24%	13.50	10.22
Offshore	40	50.09	32%	24%	16.00	12.02
Offshore	45	51.27	34%	24%	17.25	12.30
Offshore	50	60.59	31%	24%	18.75	14.54
Offshore	60	70.65	30%	24%	21.00	16.96
Offshore	70	74.08	31%	24%	23.25	17.78
Note 1 - 70' BYB slip rate is an estimated rate not a published rate						
Note 2 - BYB slip rates obtained from the Netzer Appraisal Report dated December 26, 2023						
Note 3 - NBHC recommended rates are sub-committee recommendations						
Note 4 - BYB rate comparison for 18' slip is based on 20' published rate						



NEWPORT HARBOR FOUNDATION

# Offshore Mooring Appraisal Rate Analysis

Rate Comparisons			Increase Is Phased-in Through FYE 2030 Price Per Linear Foot Per Month					
Designated Mooring Lengths	BYB Average Slip Rental Rate \$/LF	Current Mooring Rates \$/LF	Effective Jan 1, 2025	Effective July 1, 2025	Effective July 1, 2026	Effective July 1, 2027	Effective July 1, 2028	Effective July 1, 2029
LOA Feet	\$ per LF	\$ per LF	FYE 2025	FYE 2026	FYE 2027	FYE 2028	FYE 2029	FYE 2030
18	32.23	1.67	2.27	2.88	4.08	5.29	6.50	7.71
25	32.38	3.34	3.74	4.19	5.08	5.98	6.87	7.77
30	39.60	3.34	3.91	4.53	5.78	7.02	8.26	9.50
35	42.59	3.34	3.98	4.68	6.06	7.45	8.84	10.22
40	50.09	3.34	4.16	5.04	6.78	8.53	10.28	12.02
45	51.27	3.34	4.19	5.09	6.90	8.70	10.50	12.30
50	60.59	3.34	4.42	5.54	7.79	10.04	12.29	14.54
60	70.65	3.34	4.66	6.02	8.76	11.49	14.22	16.96
70	74.08	3.34	4.74	6.19	9.09	11.98	14.88	17.78

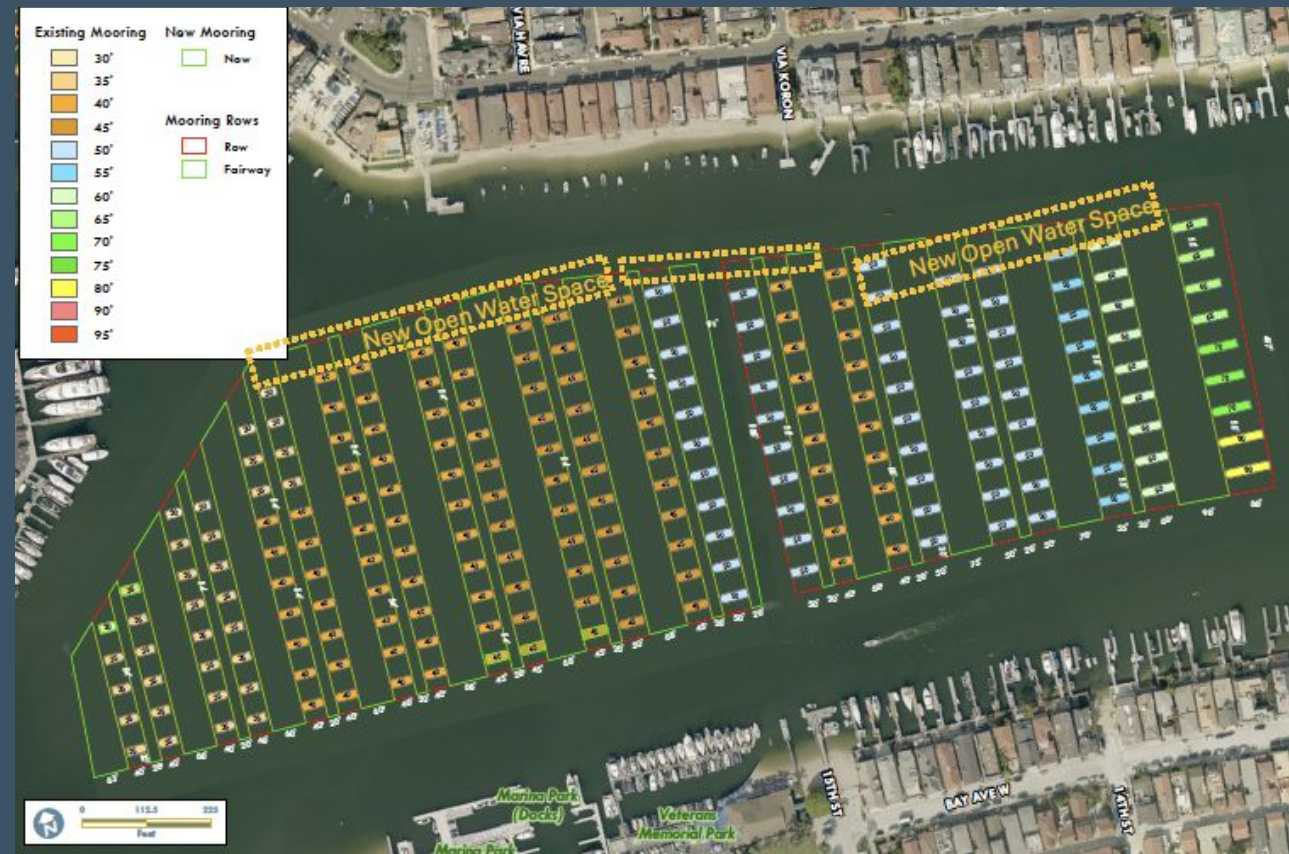
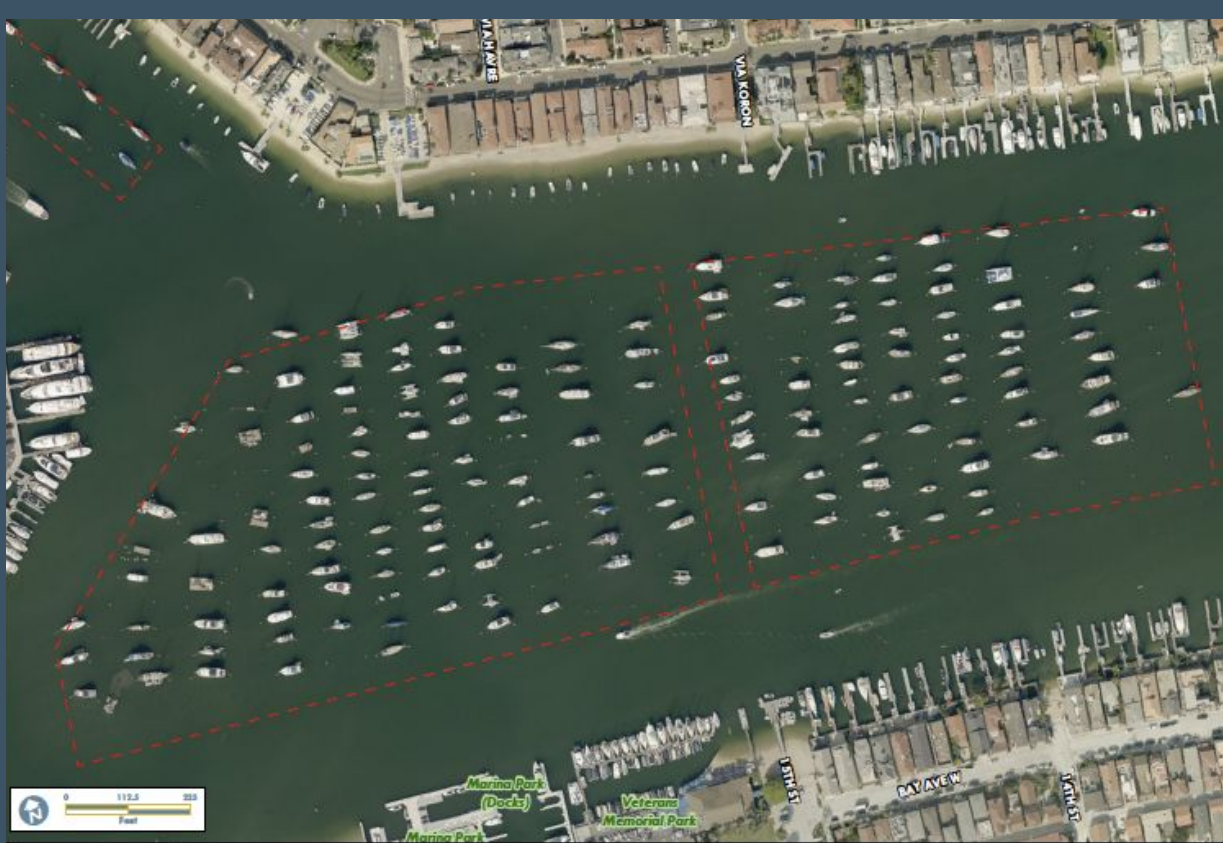
Designated Mooring Lengths/Feet	BYB Average Slip Rental Rate \$/Month	Current Mooring Rates \$/Month	Price Per Mooring LOA Per Month					
			Jan 1, 2025 FYE 2025	July 1, 2025 FYE 2026	July 1, 2026 FYE 2027	July 1, 2027 FYE 2028	July 1, 2028 FYE 2029	July 1, 2029 FYE 2030
18	580.14	30.06	40.93	51.79	73.52	95.25	116.98	138.72
25	809.50	83.50	93.46	104.75	127.00	149.50	171.75	194.25
30	1,188.00	100.20	117.34	135.90	173.40	210.60	247.80	285.00
35	1,490.65	116.90	139.41	163.80	212.10	260.75	309.40	357.70
40	2,003.60	133.60	166.52	201.60	271.20	341.20	411.20	480.80
45	2,307.15	150.30	188.62	229.05	310.50	391.50	472.50	553.50
50	3,029.50	167.00	220.76	277.00	389.50	502.00	614.50	727.00
60	4,239.00	200.40	279.41	361.20	525.60	689.40	853.20	1,017.60
70	5,185.83	233.80	331.72	433.30	636.30	838.60	1,041.60	1,244.60



NEWPORT HARBOR FOUNDATION

# Open Water Initiative

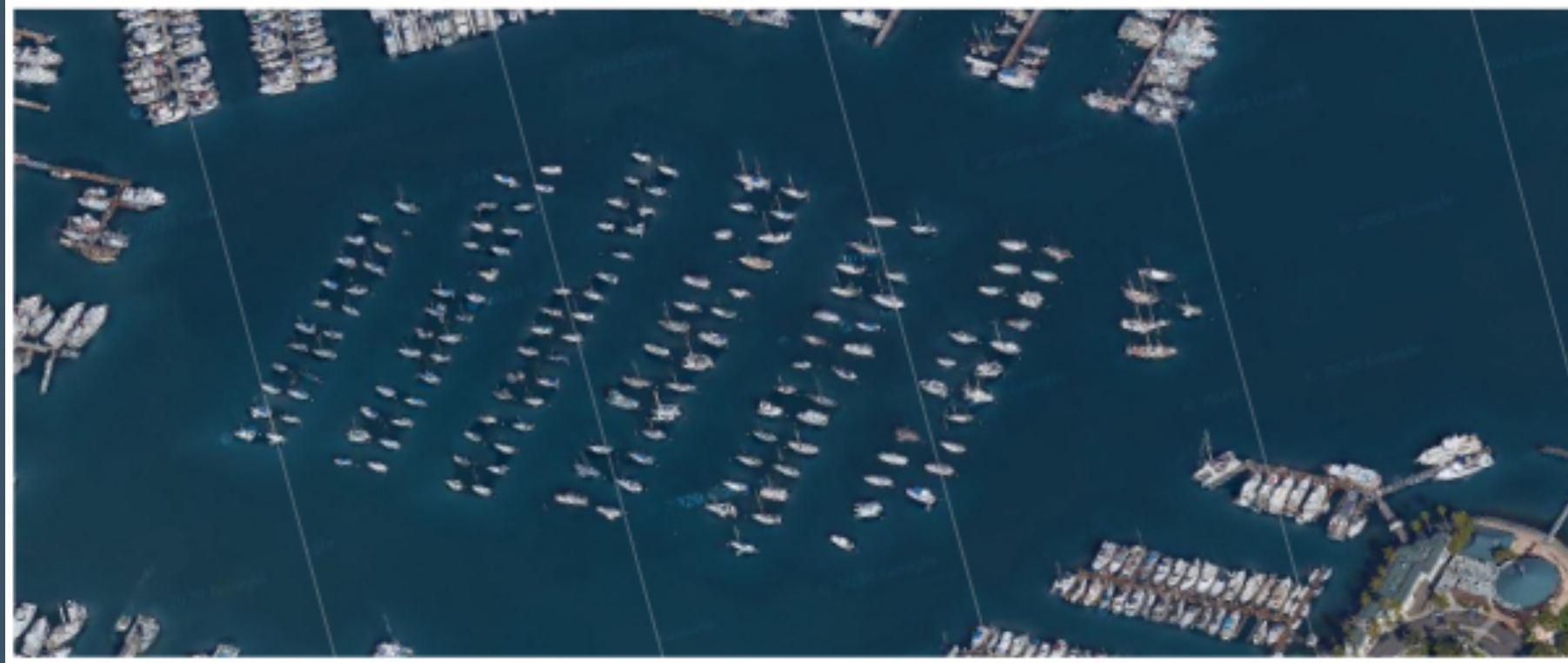
## Current and Proposed J & H Field Mooring Configuration



NEWPORT HARBOR FOUNDATION

# Open Water Initiative

## Americas Cup Harbor – San Diego Harbor



State  
OF THE  
Bay



NEWPORT HARBOR FOUNDATION

# State OF THE Bay



NEWPORT HARBOR FOUNDATION